



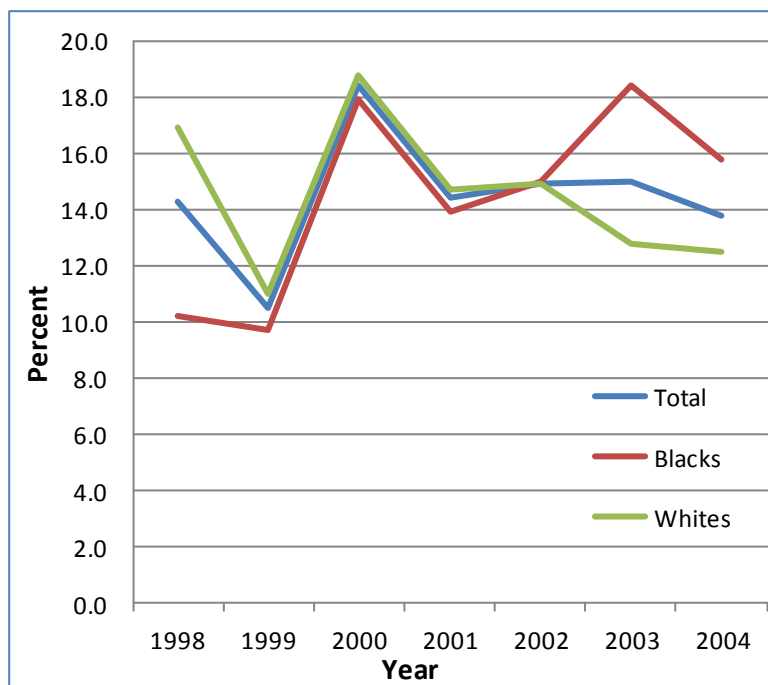
October—December 2011
Fast Facts

Tobacco Smoke and Your Baby

- Infants exposed to secondhand smoke are at increased risk of Sudden Infant Death Syndrome (SIDS), asthma, middle ear and other diseases.
- In children aged 18 months or younger, secondhand smoke exposure is responsible for 150,000–300,000 new cases of bronchitis and pneumonia and 7,500–15,000 hospitalizations annually in the United States.
- Babies of mothers who smoke during pregnancy have 3 times the odds of death due to SIDS, while those exposed to secondhand smoke in infancy have 2.5 times the odds of death due to SIDS.
- From 1998—2004, 14.5% of Louisiana women reported smoking around their infant(s); there was no significant change in prevalence over these years.
- From 1998-2004, Black women experienced a 9% annual increase in the odds of infant secondhand smoke exposure, while white women experienced a 5% annual decrease during this time
- The Louisiana Smoke Free Air Act bans smoking in public places and Louisiana Act 838 prohibits smoking inside any personal vehicle when children under age 13 are present.
- No Louisiana legislation limits secondhand smoke exposure in the home, the primary source of secondhand smoke exposure for infants and children according to the 2007 U.S. Surgeon General's report.

DID YOU KNOW?..

Infant Secondhand Smoke Exposure, 1998-2004*



* Data Source: Louisiana PRAMS

Trend (odds ratio) of Infant Secondhand Smoke Exposure at home by Race, 1998-2004

	OR	95% CI
Total	1.00	0.97-1.03
Black	1.09	1.03-1.15
White	0.95	0.91-0.99

Factors Associated with Infant Secondhand Smoke Exposure

	OR	95% CI	Reference Group
Maternal age < 20 years	1.71	1.25-2.35	Age > 34 years
Less than high school	1.30	1.06-1.60	More than High School
High School Diploma	1.31	1.11-1.55	More than High School
Unmarried	1.27	1.08-1.50	Other marital status
Medicaid-paid delivery	1.37	1.15-1.63	Non-Medicaid delivery
Never breastfed	1.77	1.39-2.26	Current breastfeeding
Not currently breastfeeding	1.69	1.32-2.26	Current breastfeeding
Preterm delivery (<37 wks)	1.31	1.06-1.62	Term delivery
Current smoker	3.08	2.69-3.53	Not current smoker

OR = Odds ratio; 95% CI = 95% Confidence Interval

Source: Liang Y, Funke L, Tran T. Infant Secondhand Smoke Exposure in Louisiana, 1998-2004: Trend and High Risk Population. Journal of the Louisiana State Medical Society 2011; 163: 124-133.